

THE CORPORATION OF THE MUNICIPALITY OF SOUTH DUNDAS

BY-LAW NO. 2026-27

A BY-LAW of the Corporation of the Municipality of South Dundas to assess the maintenance costs of the Duncan Municipal Drain.

WHEREAS section 74 of the *Drainage Act*, R.S.O. 1990, c. D.17 (the "Act") authorizes a municipality to maintain and repair a drain constructed under the Act and to assess the costs thereof upon the lands and roads in the drainage area in the same proportion as the original construction assessment;

WHEREAS the maintenance works requested are now complete and the accumulated costs are \$20,703.09;

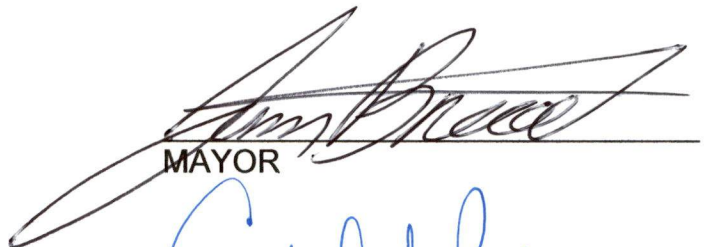
AND WHEREAS the applicable 1/3 grant has been deducted from the gross assessment for agricultural lands;

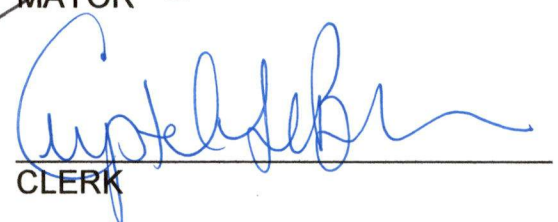
AND WHEREAS it is necessary to levy the respective costs in the same proportion as authorized in construction By-Law No. 76-5 of the former Township of Matilda.

NOW THEREFORE the Council of the Corporation of the Municipality of South Dundas enacts as follows:

1. The assessments as detailed in Schedule "A" are hereby levied on the applicable properties and are due and payable on or before June 30, 2026.
2. Late payments will accrue interest at the prevailing tax rate of 1.25% per month.

READ and passed, signed and sealed in open Council this 29th day of April, 2026.

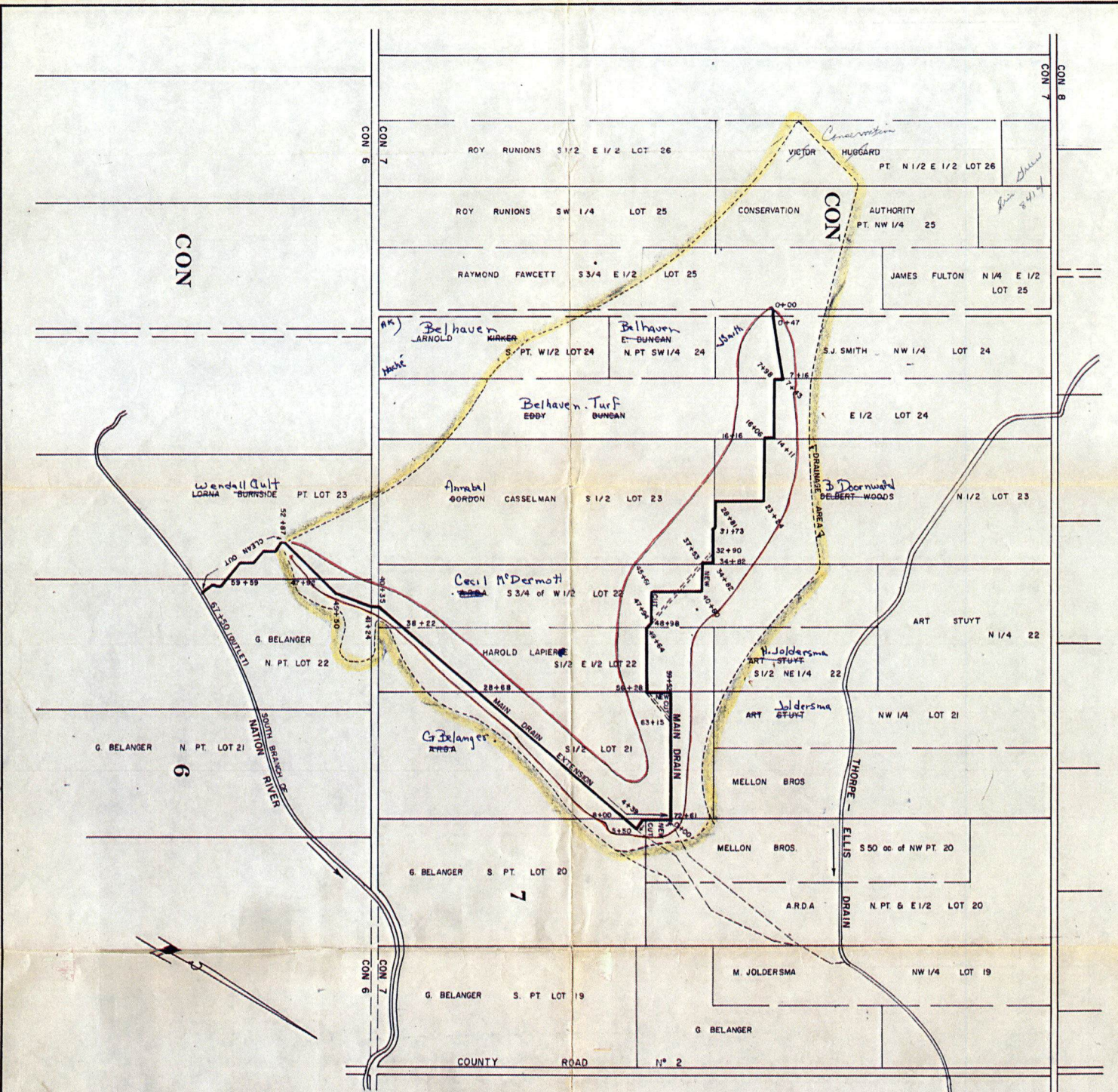

MAYOR


CLERK

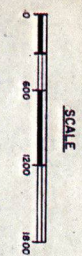
SCHEDULE A
To By-Law No. 2026-27

Duncan Drain (76-5)

Roll # (0506-)	Assessed Amount	
006-008-41000	\$	185.18
006-008-41000		467.28
006-008-40600		15.58
006-008-39900		663.71
006-008-38800		268.26
006-008-38000		229.60
006-008-37800		563.54
006-008-38000		207.03
006-008-38000		1,309.19
006-008-37400		1,687.09
006-008-37200		1,705.92
006-008-36600		1,705.38
006-008-36800		153.66
006-008-36200		1,555.82
006-008-35800		57.11
006-008-33600		2,305.73
006-008-35000		221.77
006-008-33600		360.06
006-007-86000		250.32
006-007-88300		52.00
006-007-88300		134.22
006-007-86000		8.53
006-007-88320		92.99
006-007-88400		41.71
Municipality of South Dundas	\$	256.14
	<u>\$</u>	<u>14,497.80</u>



DUNCAN DRAIN
PLAN
OF THE
TOWNSHIP OF MATILDA
CONSTRUCTION 1975



STOWELL & ASSOCIATES LTD.
 CONSULTING CIVIL ENGINEERS
 CORNWALL ONTARIO

DATE SEPTEMBER 1st 1975
 PER *[Signature]* B.C.
 C.E.-01.3

