

THE CORPORATION OF THE MUNICIPALITY OF SOUTH DUNDAS

BY-LAW NO. 2026-50

**A By-Law of the Corporation of the Municipality of South Dundas to assess the maintenance and engineering costs of the Saddle mire Municipal Drain.**

**WHEREAS** section 74 of the *Drainage Act*, R.S.O. 1990, c. D.17 (the "Act") authorizes a municipality to maintain and repair a drain constructed under the Act and to assess the costs thereof upon the lands and roads in the drainage area in the same proportion as the original construction assessment;

**AND WHEREAS** the maintenance works requested on the Saddle mire Drain are now complete and the accumulated costs are \$39,076.78;

**AND WHEREAS** the applicable 1/3 grant has been deducted from the gross assessment for agricultural lands;

**AND WHEREAS** it is necessary to levy the respective costs in the same proportion as authorized in construction By-Law No. 2026-48 of the Municipality of South Dundas.

**AND WHEREAS** the Section 76 update of the Saddle mire Drain is now complete, and the accumulated costs are \$15,773.89;

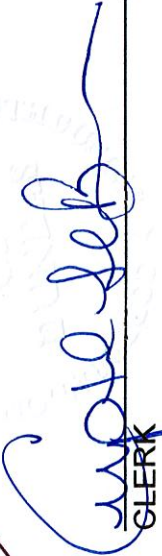
**AND WHEREAS** it is necessary to levy the respective costs in the same proportion as authorized in By-Law No. 2026-48 of the Municipality of South Dundas.

**NOW THEREFORE** the Council of the Corporation of the Municipality of South Dundas enacts as follows:

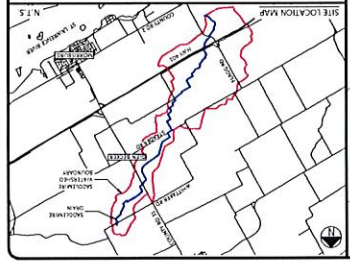
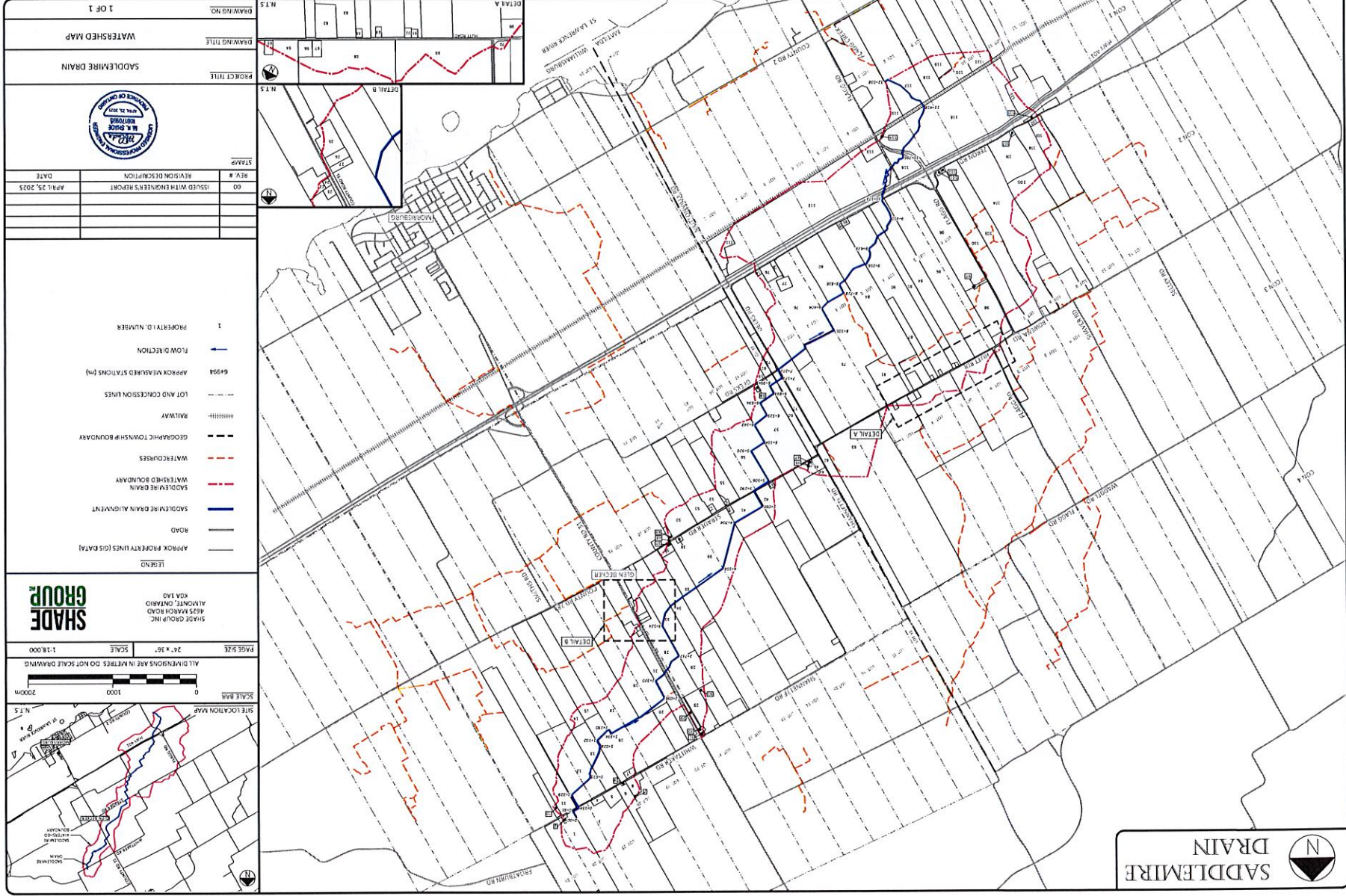
1. The assessments as detailed in Schedule "A" are hereby levied on the applicable properties and are due and payable on or before June 30, 2026.
2. Late payments will accrue interest at the prevailing tax rate of 1.25% per month.

**READ** and passed in open Council, signed and sealed this 27<sup>th</sup> day of May, 2026.

  
MAYOR

  
CLERK

**SADDLEMIRE DRAIN**



PAGE SIZE: 24" x 36" SCALE: 1:8,000  
 SHADE GROUP INC.  
 4825 PARK ROAD  
 ALMONTE, ONTARIO  
 K0A 1A0

- LEGEND
- APPROX PROPERTY LINES (GIS DATA)
  - ROAD
  - SADDLEMIRE DRAIN ALIGNMENT
  - WATERSHED BOUNDARY
  - SADDLEMIRE DRAIN
  - WATERCOURSES
  - GEOGRAPHIC TOWNSHIP BOUNDARY
  - RAILWAY
  - LOT AND CONCESSION LINES
  - APPROX MEASURED STATIONS (m)
  - FLOW DIRECTION
  - PROPERTY ID NUMBER

| REV # | REVISION DESCRIPTION          | DATE           |
|-------|-------------------------------|----------------|
| 00    | ISSUED WITH ENGINEER'S REPORT | APRIL 25, 2025 |
|       |                               |                |
|       |                               |                |



PROJECT TITLE: SADDLEMIRE BRAIN  
 DRAWING TITLE: WATERSHED MAP  
 DRAWING NO.: 1 OF 1



**SCHEDULE A**

To By-Law No. 2026-50

Saddlemire Drain

Assessment Update 2026-48

| Roll #            | Engineer  |          | Maintenance |           | Total |
|-------------------|-----------|----------|-------------|-----------|-------|
|                   | Sec 76    | 2021     | 2025        | 2025      |       |
| 0506001-005-03200 | \$ 338.06 | \$ 20.03 | \$ 469.65   | \$ 827.74 |       |
| 0506001-005-03205 | 26.16     | 1.09     | 38.44       | 65.69     |       |
| 0506001-005-03800 | 684.45    | 37.47    | 1,317.54    | 2,039.46  |       |
| 0506001-005-03810 | 35.92     | 1.50     | 52.79       | 90.21     |       |
| 0506001-005-04400 | 85.16     | 3.56     | 125.18      | 213.90    |       |
| 0506001-005-05600 | 75.34     | 3.15     | 110.74      | 189.23    |       |
| 0506001-005-06802 | 0.84      | 0.04     | 0.82        | 1.70      |       |
| 0506001-005-06800 | 40.84     | 1.71     | 60.04       | 102.60    |       |
| 0506001-005-06200 | 9.96      | 0.42     | 14.63       | 25.01     |       |
| 0506001-004-27850 | 17.26     | 0.72     | 16.92       | 34.90     |       |
| 0506001-004-38400 | 222.25    | 9.29     | 326.70      | 558.24    |       |
| 0506001-004-39300 | 853.31    | 54.74    | 1,924.78    | 2,832.84  |       |
| 0506001-004-39600 | 379.50    | 25.77    | 906.17      | 1,311.45  |       |
| 0506001-004-40800 | 53.02     | 2.22     | 51.96       | 107.19    |       |
| 0506001-004-40900 | 72.08     | 3.01     | 70.64       | 145.72    |       |
| 0506001-004-41400 | 748.46    | 50.63    | 1,187.03    | 1,986.12  |       |
| 0506001-004-41410 | 46.95     | 1.96     | 69.01       | 117.93    |       |
| 0506001-004-42000 | 411.54    | 19.93    | 467.27      | 898.74    |       |
| 0506001-004-42600 | 624.09    | 36.17    | 847.94      | 1,508.20  |       |
| 0506001-004-43800 | 42.64     | 1.78     | 62.68       | 107.10    |       |
| 0506001-004-53500 | 376.77    | 24.90    | 583.84      | 985.52    |       |
| 0506001-004-51800 | 11.75     | 0.49     | 17.27       | 29.52     |       |
| 0506001-004-53400 | 16.70     | 0.70     | 24.55       | 41.95     |       |
| 0506001-004-52800 | 7.55      | 0.32     | 11.11       | 18.98     |       |
| 0506001-004-56400 | 35.62     | 1.49     | 52.35       | 89.46     |       |
| 0506001-004-55850 | 39.07     | 1.63     | 57.43       | 98.14     |       |
| 0506001-004-55800 | 26.42     | 1.10     | 38.84       | 66.37     |       |
| 0506001-004-58400 | 510.03    | 30.39    | 712.55      | 1,252.98  |       |
| 0506001-004-55200 | 273.73    | 11.44    | 268.26      | 553.43    |       |
| 0506001-004-54900 | 8.53      | 0.36     | 12.53       | 21.41     |       |
| 0506001-004-54800 | 3.94      | 0.16     | 5.78        | 9.88      |       |
| 0506001-004-64200 | 12.47     | 0.52     | 12.22       | 25.22     |       |
| 0506001-004-58600 | 457.50    | 29.71    | 696.48      | 1,183.69  |       |
| 0506001-004-63600 | 389.46    | 22.84    | 535.49      | 947.80    |       |
| 0506001-004-64400 | 376.53    | 24.71    | 579.39      | 980.63    |       |
| 0506001-004-64800 | 29.10     | 1.22     | 42.77       | 73.08     |       |
| 0506001-004-65000 | 3.47      | 0.15     | 5.11        | 8.72      |       |
| 0506001-004-65400 | 9.70      | 0.41     | 14.25       | 24.35     |       |
| 0506001-004-65420 | 981.23    | 59.37    | 1,391.94    | 2,432.54  |       |
| 0506001-004-67801 | 23.77     | 0.99     | 34.94       | 59.71     |       |
| 0506001-004-67800 | 239.75    | 16.54    | 581.69      | 837.98    |       |
| 0506001-004-69600 | 114.80    | 4.80     | 168.74      | 288.34    |       |
| 0506001-004-68100 | 15.46     | 0.65     | 22.73       | 38.83     |       |
| 0506001-004-70200 | 3.96      | 0.17     | 3.88        | 8.00      |       |
| 0506001-004-71400 | 22.60     | 0.94     | 33.23       | 56.77     |       |
| 0506001-004-71200 | 4.42      | 0.18     | 6.50        | 11.10     |       |
| 0506001-004-71000 | 6.26      | 0.26     | 9.20        | 15.72     |       |
| 0506001-003-75500 | 0.60      | 0.03     | 0.89        | 1.52      |       |
| 0506001-003-76800 | 10.08     | 0.42     | 14.80       | 25.30     |       |

**SCHEDULE A**

To By-Law No. 2026-50

Saddlemire Drain

Assessment Update 2026-48

| Roll #            | Engineer |       | Maintenance |          | Total |
|-------------------|----------|-------|-------------|----------|-------|
|                   | Sec 76   | 2021  | 2025        | 2025     |       |
| 0506001-003-76802 | 93.62    | 3.91  | 137.62      | 235.15   |       |
| 0506001-003-77600 | 78.21    | 3.27  | 114.95      | 196.43   |       |
| 0506001-003-78700 | 22.42    | 0.94  | 32.96       | 56.32    |       |
| 0506001-003-78750 | 68.47    | 2.86  | 100.64      | 171.97   |       |
| 0506001-003-80405 | 19.78    | 0.83  | 29.08       | 49.69    |       |
| 0506001-003-80400 | 126.45   | 5.29  | 123.92      | 255.65   |       |
| 0506001-003-81200 | 723.32   | 51.27 | 1,202.03    | 1,976.63 |       |
| 0506001-003-82200 | 548.83   | 45.81 | 1,073.99    | 1,668.63 |       |
| 0506001-003-82500 | 11.24    | 0.47  | 16.51       | 28.22    |       |
| 0506001-003-82000 | 28.19    | 1.18  | 27.63       | 57.00    |       |
| 0506001-003-82800 | 123.32   | 9.57  | 336.65      | 469.55   |       |
| 0506001-003-83400 | 23.57    | 0.99  | 34.66       | 59.21    |       |
| 0506006-005-74000 | 17.59    | 0.74  | 25.85       | 44.17    |       |
| 0506006-005-72000 | 82.87    | 3.46  | 121.82      | 208.15   |       |
| 0506006-005-74400 | 3.51     | 0.15  | 3.44        | 7.10     |       |
| 0506006-005-74500 | 0.38     | 0.02  | 0.55        | 0.95     |       |
| 0506006-005-74700 | 1.69     | 0.07  | 2.48        | 4.24     |       |
| 0506006-005-74710 | 1.07     | 0.04  | 1.56        | 2.67     |       |
| 0506006-005-76000 | 9.55     | 0.40  | 14.04       | 23.99    |       |
| 0506006-005-77000 | 8.11     | 0.34  | 7.95        | 16.40    |       |
| 0506006-005-78200 | 0.30     | 0.01  | 0.29        | 0.60     |       |
| 0506006-005-00400 | 91.96    | 7.05  | 247.78      | 346.79   |       |
| 0506006-005-00450 | 26.21    | 1.10  | 38.53       | 65.83    |       |
| 0506006-005-00800 | 213.27   | 21.13 | 495.28      | 729.68   |       |
| 0506006-005-01205 | 1.27     | 0.05  | 1.86        | 3.18     |       |
| 0506006-005-02405 | 456.97   | 19.10 | 447.83      | 923.91   |       |
| 0506006-005-01200 | 640.22   | 54.63 | 1,280.68    | 1,975.53 |       |
| 0506006-005-02475 | 7.95     | 0.33  | 11.68       | 19.95    |       |
| 0506006-005-02000 | 7.90     | 0.33  | 7.75        | 15.98    |       |
| 0506006-005-01600 | 7.01     | 0.29  | 10.31       | 17.61    |       |
| 0506006-005-03200 | 180.93   | 16.95 | 397.25      | 595.13   |       |
| 0506006-005-02800 | 44.09    | 1.84  | 43.21       | 89.14    |       |
| 0506006-005-02900 | 5.40     | 0.23  | 7.94        | 13.57    |       |
| 0506006-005-04900 | 18.44    | 0.77  | 27.11       | 46.33    |       |
| 0506006-005-04000 | 392.85   | 35.03 | 821.21      | 1,249.09 |       |
| 0506006-005-03600 | 4.09     | 0.17  | 6.01        | 10.28    |       |
| 0506006-005-04407 | 4.99     | 0.21  | 7.33        | 12.53    |       |
| 0506006-005-04700 | 43.08    | 1.80  | 42.22       | 87.10    |       |
| 0506006-005-04600 | 0.41     | 0.02  | 0.60        | 1.03     |       |
| 0506006-005-04800 | 0.60     | 0.03  | 0.89        | 1.52     |       |
| 0506006-005-04400 | 312.15   | 30.89 | 724.05      | 1,067.08 |       |
| 0506006-005-05000 | 100.96   | 10.09 | 236.44      | 347.49   |       |
| 0506006-005-05200 | 0.50     | 0.02  | 0.72        | 1.24     |       |
| 0506006-005-06000 | 0.38     | 0.02  | 0.56        | 0.96     |       |
| 0506006-005-05400 | 186.29   | 18.80 | 440.76      | 645.85   |       |
| 0506006-005-05800 | 222.77   | 17.50 | 410.27      | 650.54   |       |
| 0506006-005-06400 | 96.03    | 4.01  | 94.11       | 194.15   |       |
| 0506006-005-07000 | 0.61     | 0.03  | 0.90        | 1.54     |       |
| 0506006-005-07400 | 16.51    | 0.69  | 16.19       | 33.39    |       |
| 0506006-005-07425 | 2.18     | 0.09  | 3.21        | 5.49     |       |

